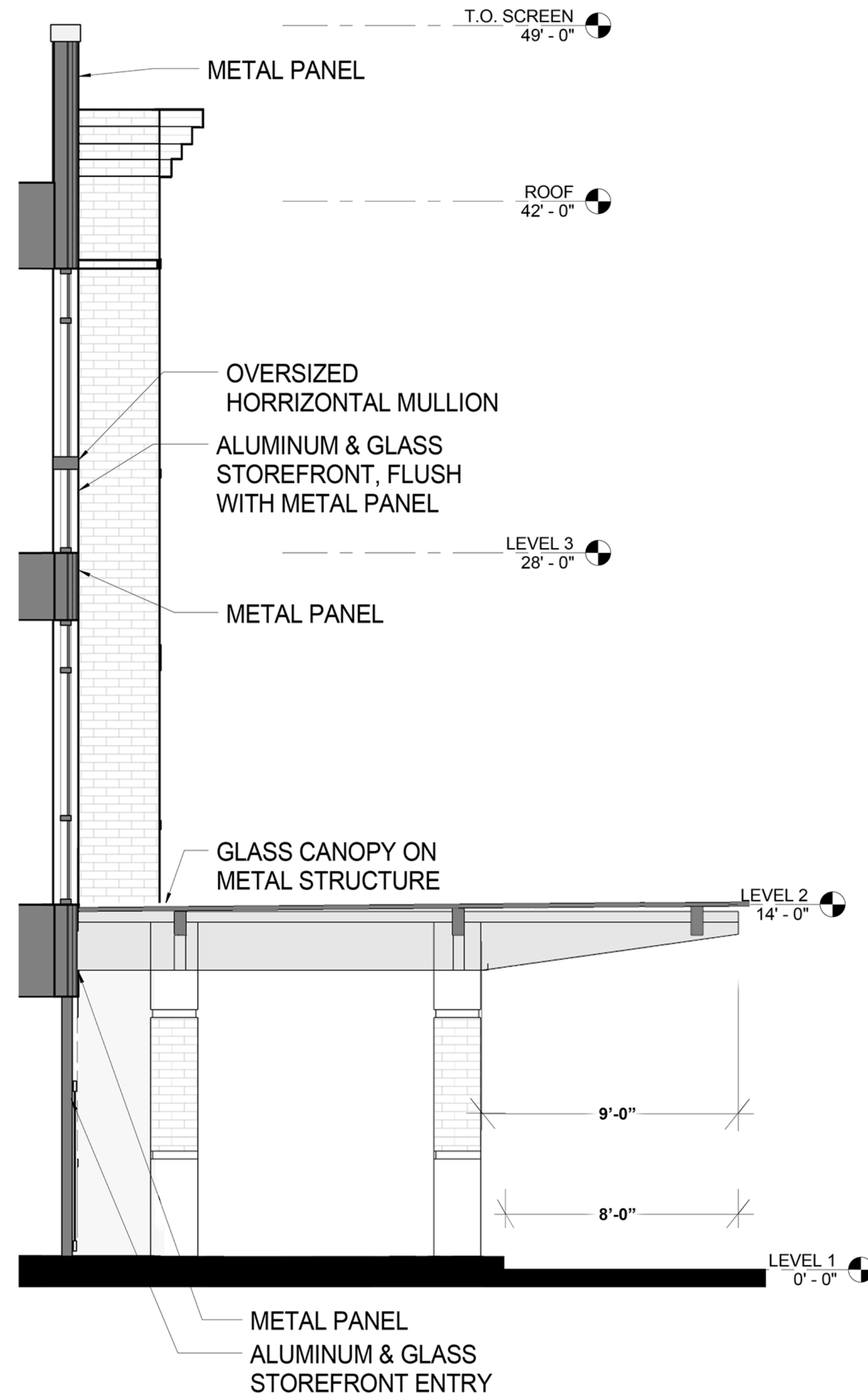


WALL MOUNTED SIGN
LOCATION, SIGN TO COMPLY
WITH MONTCLAIR ZONING
ORDINANCE. SEE SIGN
DRAWINGS FOR DETAILS
AND DIMENSIONS.

PAINTED METAL
PANEL

METAL & GLASS
CANOPY

BRICK & CAST
STONE PIER



NOTE: DRAWINGS AT SCALE WHEN PRINTED AT 24" x 36"

ARCHITECTS



95 WASHINGTON STREET, MORRISTOWN, NJ 07960
t. 973.539.5353 f. 973.539.0916
THE WOOLWORTH BUILDING
233 BROADWAY SUITE 2150, NEW YORK, NY 10279
t. 212.982.7900 f. 212.982.8111
www.nkarchitects.com

ALLEN R. KOPELSON, AIA AI 05644
BEN P. LEE, AIA AI 07017
STEPHEN P. ALUOTTO, AIA AI 09269
PAUL J. DRAGO, AIA AI 17503
WALTER J. KNEIS, AIA AI 10867
DANIEL J. TOPPING, AIA AI 16263

THIS DOCUMENT IS THE EXCLUSIVE PROPERTY OF
NADASKAY KOPELSON ARCHITECTS. THE DOCUMENT AND
THE INFORMATION IT CONTAINS MAY NOT BE REPRODUCED
OR USED FOR OTHER THAN THE SPECIFIC PROJECT FOR
WHICH IT WAS PREPARED WITHOUT THE EXPLICIT CONSENT
OF NADASKAY KOPELSON ARCHITECTS.

PRELILMINARY & FINAL MAJOR SITE PLAN FOR ONE BAY URBAN RENEWAL LLC.

PROPOSED MEDICAL OFFICE
BUILDING

BLOCK 4215, LOT1, TOWNSHIP OF MONTCLAIR
AND
BLOCK 106, LOT 15, BOROUGH OF GLEN RIDGE,
ESSEX COUNTY, NEW JERSEY

2	PLANNING BOARD SUBMISSION	01-31-18
1	HISTORICAL PRESERVATION COMMITTEE REVIEW	10-19-17

NO. DESCRIPTION DATE

DRAWING TITLE
CONSTRUCTION DETAILS

DATE

SCALE

1/4" = 1'-0"

DRAWN

MM

CHECKED

AK

DRAWING NUMBER

A-5B

NK PROJECT NUMBER: 2133.000